



ORANGE COUNTY
NORTH CAROLINA



SUMMARY OF AGRICULTURAL RESOURCES



TABLE OF CONTENTS

Executive Summary..... 1

Orange County Agencies 3

Orange County Department of Environment, Agriculture, Parks & Recreation (DEAPR) – Orange Soil & Water 4

 Soil & Water Management..... 4

 Voluntary Agriculture Districts 5

 Ag Preservation Board..... 5

 Farmland Protection Programs..... 6

 Lands Legacy Program..... 7

 Century Farm Program..... 8

 Blackwood Farm..... 9

 Barn Quilt Initiative..... 10

 Program/Staff Contacts..... 11

Orange County Economic Development Department..... 12

 Agricultural Grant Program 13

 Local Schools Purchasing Program 14

 Farmland Matching 15

 Program/Staff Contacts..... 15

Orange County Manager’s Office 16

 USDA Grant Funded Loan Program 16

 NCDA Grant Funded Loan Program..... 17

 Program/Staff Contacts..... 17

Orange County Planning & Inspections Department 18

 Bona fide farms – zoning regulations 18

 Program/Staff Contact..... 19

Orange County Tax Administration..... 20

 Present Use Valuation 20

 Program/Staff Contacts..... 20

Orange County Visitor’s Bureau 21

 Farm Visitors App 21

 Program/Staff Contacts..... 21

State or North Carolina Agencies 23

NC Cooperative Extension-Orange County Center 24

 Breeze Incubator Farm..... 24

 Agricultural Summit..... 25

 Junior Livestock Show..... 26

 10% Campaign 26

 Local Foods..... 27

 Program/Staff Contacts 28

NC Division of Forest Resources..... 29

 Forest Management Plans 29

 Program/Staff Contacts 29

U.S. Federal Agencies..... 31

USDA Farm Service Agency, Durham-Orange County 32

 Farm Numbers 32

 Farm Loan Programs 33

 Insurance Programs..... 36

 Disaster Assistance..... 37

 Conservation Programs..... 38

 Program/Staff Contacts 38

Non-Profits and Other Agencies 39

Piedmont Food & Agriculture Processing Center (PFAP)..... 40

 Incubator Service 40

 Program/Staff Contacts 40

Orange County Food Council 41

 Program and Goals 41

 Members 41

Local Farmers Markets 42

Schley Grange 43

Additional Agricultural Resources & Agencies..... 45-47

ORANGE COUNTY BOARD OF COMMISSIONERS (BOCC)

200 S. CAMERON ST., HILLSBOROUGH, NC • (919) 245-2130

The Orange County BOCC has a strong history of supporting agriculture in the County through various departments, programs and events. Many of these programs and events are included in this brochure.

The Orange County community and staff thank them for their continuing support.

www.orangecountync.gov/departments/board_of_county_commissioners/index.php



Mark Dorosin, Chair



Penny Rich, Vice Chair



Mia Burroughs



Barry Jacobs



Mark Marcoplos



Earl McKee



Renee Price

JANUARY 2018

EXECUTIVE SUMMARY

This agricultural resource booklet has been prepared by the Orange County Economic Development Office and is intended to provide a comprehensive source for all

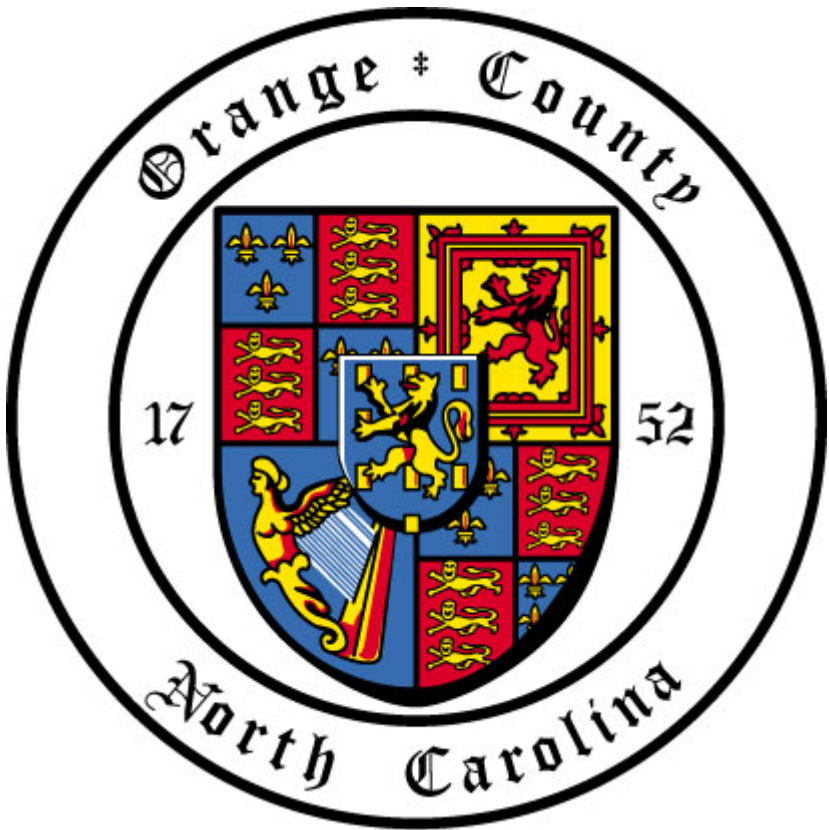
governmental services related to agriculture in Orange County. Some non-governmental and non-commercial resources which operate within the county are noted as well. We are pleased to provide this reference to anyone interested in additional information and support related to Orange County agriculture.

Orange County has a strong farming heritage, enjoys the benefits of a beautiful and productive agricultural landscape, and has a long history of support for its agricultural community. We hope this reference is helpful to you and appreciate your comments or suggestions.



We grow a lot of interesting things in Orange County. Including new farmers.

ORANGE COUNTY AGENCIES



ORANGE COUNTY DEPARTMENT OF ENVIRONMENT, AGRICULTURE, PARKS & RECREATION (DEAPR) 306 REVERE RD. HILLSBOROUGH, NC • (919) 245-2510

ORANGE COUNTY SOIL & WATER

Orange Soil and Water Conservation District provides landowners information and technical assistance on agricultural and non-agricultural land in Orange County. The District staff offer conservation assessments and planning for farmland, and also identifies any natural resource concerns such as sediment and erosion on cropland, and water quality concerns. The District also administers state and federal cost share programs for landowners that qualify with water quality or natural resource concerns. www.orangecountync.gov/departments/deapr/soil_and_water_conservation_district/index.ph



Listed are some of the soil and water management issues addressed by the District:

- Sediment & Soil Erosion
- Water Quality
- Animal Waste Management
- Nutrient Management
- Stream Bank Stabilization
- Stream Buffer System
- Livestock Exclusion
- Riparian Restoration

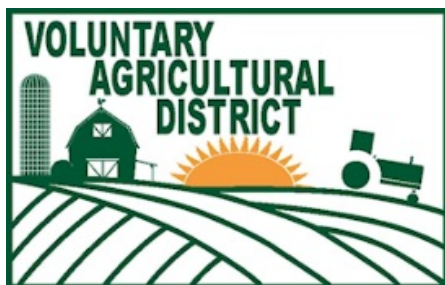
The District offers a variety of educational programs for children and adults that increase the awareness and importance of conservation and preservation of natural resources.



Voluntary Agriculture Districts

Orange County adopted the Voluntary Agricultural District ordinance establishing procedures for creating Voluntary Agricultural Districts in 1992.

The purpose of the ordinance is to promote the preservation of farmland in Orange County so development and growth will be



accompanied by protection of farms from non-farm development and other negative impacts, recognizing the importance of agriculture to the economic and cultural life of the County. The Voluntary Agricultural Districts Program (VAD) promotes the pride and tradition of Orange County Agriculture. The program is designed to offer protection from nuisance suits and recognition from the community of the locations of working farms in the area with a ten year conservation agreement recorded at Orange County Land Records. For farmers who are concerned about what will happen to their farm in the future but are not ready to undertake a permanent conservation easement, the VAD program may be an option to consider. The Agricultural Preservation Board meets every other month to consider and approve applications for the Voluntary Agriculture District program and then the application is presented to the Orange County Board of County Commissioners for final approval.

www.orangecountync.gov/departments/deapr/soil_and_water_conservation_district/voluntary_agriculture_program_and_farmland_preservation_program.php

Agricultural Preservation Board

The primary purpose of the Agricultural Board (APB) is to promote the economic and cultural importance of agriculture in the County, and to encourage voluntary preservation and protection of farmland for future production.

www.orangecountync.gov/departments/deapr/agricultural_preservation_board.php

Farmland Protection Programs

Orange County has a long history of working with farmers to protect our agricultural economy and culture. In 2009 the County adopted a Farmland Protection Plan that was approved by the NC Department of Agriculture and Consumer Services. The plan describes a comprehensive menu of programs and activities to protect farming in Orange County, including

- A variety of financial and technical assistance by the Orange Soil and Water Conservation District (SWCD) and Farm Services Agency.
- Oversight and guidance by the Orange SWCD Board of Supervisors and the Agricultural Preservation Board.
- Technical assistance from the Cooperative Extension Service (including Breeze Farm incubator program & PLANT).
- Development of new partnerships and programs by the County's agricultural economic development specialist.
- Support for area farmers markets and Piedmont Food and Agricultural Processing Center (PFAP).
- Efforts to support agricultural interests through the planning and zoning processes by the Orange County Planning and Inspections Department.

In addition to the variety of measures to protect farmland through education, planning, cost-share programs, land use regulation/zoning, and economic development, Orange County works with landowners to protect farmland with agricultural conservation easements.

Conservation easements are legal agreements that in exchange for a mutually agreed upon price, establish permanent restrictions on the future development of land while keeping it in private ownership. The County acquires conservation easements through its Lands Legacy program.



[www.orangecountync.gov/document_center/DEAPR/Farmland Protection Plan.pdf](http://www.orangecountync.gov/document_center/DEAPR/Farmland_Protection_Plan.pdf)

Lands Legacy Program

Orange County's award winning Lands Legacy program was established in April 2000. The purpose of the program is to work with interested landowners and other partners to protect and conserve the County's most important natural and cultural resource lands before they are damaged or destroyed. The program is administered by the Department of Environment, Agriculture, Parks and Recreation (DEAPR).

Through Lands Legacy, the County has preserved all or portions of 18 active farms (1,900 acres), acquired land for seven new parks and conserved more than 600 acres of natural open space in the Eno River, Cane Creek, Little River, and New Hope Creek watersheds, all upstream of public water supply intakes. The County works with many partners including landowners interested in conserving their land through the granting of permanent conservation easements. Other key partners include the Eno River Association, Triangle Land Conservancy, OWASA, Duke University, and other local governments. The County also received over \$5 million in state and federal grants for park acquisition/construction and for conserving farms and open space.

[www.orangecountync.gov/departments/deapr/lands_legacy_program.p
hp](http://www.orangecountync.gov/departments/deapr/lands_legacy_program.php)



Century Farm Program

Orange County participates in the Century Farm Family program operated by the North Carolina Department of Agriculture and Consumer Services. For over 45 years, this program has celebrated and recognized farm families who have worked hard to maintain their farm in continuous ownership in the same family for over 100 years. There is also a new Bicentennial Farm program to honor those farms that have been in continuous family ownership for over 200 years. There are currently 24 Century Farms in the County; two of these also qualify as Bicentennial Farms.



The Century Farm program is strictly an honorary recognition program that does not provide any tax relief or other financial incentives. To be eligible to become a Century Farm, land owners must provide a record of continuous ownership by a family for 100 years or more. This can be established from a title search or original records such as deeds or land patents. In some cases, other authentic land records are acceptable. Participants receive a special Century Farm road sign and certificate.



Orange County DEAPR staff can provide assistance with the title research and preparation of the application form.

<http://www.ncagr.gov/paffairs/century/index.htm>

Blackwood Farm

Blackwood Farm Park is a 152 acre park featuring four miles of hiking trails, an historic farmhouse, barn and additional outbuildings that opened June 9, 2015.

Other amenities include open fields, picnic shelter, fishing pond and restrooms.



The Blackwood Farm was acquired in 2001 through Orange County's Lands Legacy Program. A Master Plan for the park was adopted by the Orange County Board of County Commissioners in 2011. The Master Plan called for low-impact recreation while retaining components for the natural, scenic, agricultural and historic character of the farm.

For more information, hours of operation and location, visit:

www.orangecountync.gov/deaprr/blackwood_farm_park.php



Barn Quilt Initiative

The American barn quilt movement started in Ohio when Donna Sue Groves painted a quilt block on her barn to honor her mother, a master quilter. From there she and neighbors created a driving trail of squares hung on barns to attract tourists looking for a day trip who might then stop and spend money on gas, food or crafts made by local artists. The first quilt square was hung in 2001 and sparked a grassroots phenomenon and a new form of American folk art.



Orange County is in the beginning stages of consideration of this initiative for farms as part of local agri-tourism.



Program/Staff Contacts:

Dave Stancil, Director

dstancil@orangecountync.gov

(919) 245-2510

Brent Bogue, USDA-NRCS District Conservationist

bbogue@orangecountync.gov

(919) 245-2751

Gail Hughes, Soil Conservationist

ghughes@orangecountync.gov

(919) 245-2753

Kenny Ray, Soil Conservationist

kray@orangecountync.gov

(919) 245-2752

Keith Barnhardt, Blackwood Farm Park Manager

kbarnhardt@orangecountync.gov

(919) 967-3766

Kim Livingston, Land Conservation Manager

klivingston@orangecountync.gov

(919) 245-2514

Lisa Pope, Administrative Assistant II

lpope@orangecountync.gov

(919) 245-2750

Peter Sandbeck, Cultural Resources Coordinator

psandbeck@orangecountync.gov

(919) 245-2517

Todd Roberts, Soil Conservationist

troberts@orangecountync.gov

(919) 245-2754

Tom Davis, Water Resources Coordinator

tdavis@orangecountync.gov

(919) 245-2713



ORANGE COUNTY ECONOMIC DEVELOPMENT

131 W MARGARET LN, HILLSBOROUGH, NC • (919) 245-2325

The Orange County Economic Development Office promotes the economic interest of Orange County in order to continually improve the quality of life for all its residents. With one of its major efforts in the area of agriculture, food, and rural economic development, Orange is one of only three counties in North Carolina to have a full-time agriculture economic developer. orangecountync.gov/departments/economic_development.php
www.growinorangenc.com



The Economic Development Office supports local agriculture and food systems development in many ways. The following are some examples of how the office promotes the development of those markets in support of agriculture.

Promotion and support of:

- Piedmont Food & Ag Processing Center – our local culinary incubator and shared use kitchen
- Breeze Farm – our 270-acre incubator farm
- Food Processing & Manufacturing Initiative – NC Economic Development Partnership
- Bona Fide Farms and Agritourism
- The NC Farms App – Orange County

Assistance in implementing:

- 10% Local Purchasing Campaign & other collaboration with NC State University and its Extension Program
- The Annual Orange County Agricultural Summit
- The Orange County Food Council – 15 members including elected officials and the Agriculture Economic Developer
- Various grants in support of local food and agriculture - NCDA and USDA

Development and implementation of:

The recently funded program for GAP Certification & school system local food purchasing
Promoting viable sites for food processing & manufacturing and agribusinesses
Collaboration towards a Regional Food Systems Master Plan
Farmer contact lists and county agricultural data
Farmland Matching Program linking new farmers to land.
Ag Grant Program - \$290,000+ / 38 recipients to date

Agricultural Grant Program

www.orangecountync.gov/farms/index.php

The Agriculture Economic Development grant program assists local farms/farmers to develop new sources of agricultural income through the provision of cost-share grants funded by the Orange County Article 46 ¼ cent sales tax funds.

The grant program provides two types of grants – Small Grants (to \$1,000.00) and Large Grants (\$1,000.01 – \$10,000.00). To date the County has awarded \$300,513.75 to 36 farms in Orange County which has created 99 full, part-time, seasonal and temporary jobs. The grants are awarded quarterly or until the funds are exhausted.

The Agricultural Grant committee is comprised of members from the Orange County Economic Development Advisory Board, the Farmland Preservation Board, Orange County Cooperative Extension, the Orange County Agricultural Developer and other relevant staff.

For further information, consult the Orange County Economic Development office at (919) 245-2325.

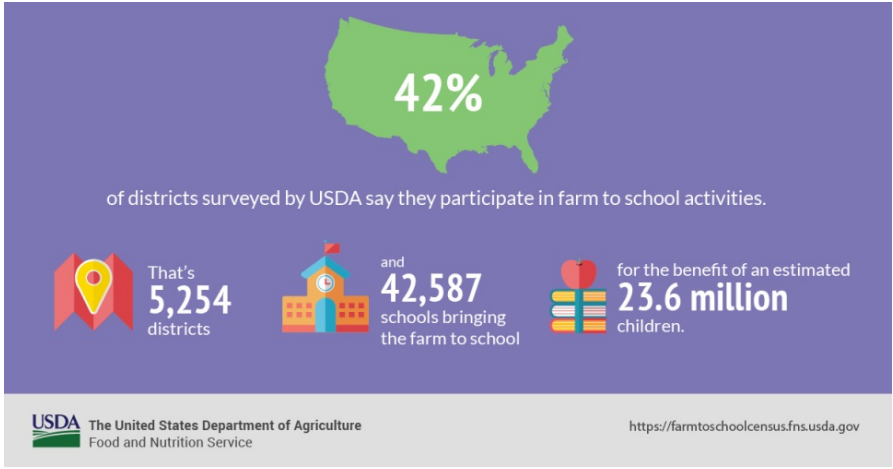
Grants applications can be submitted by email, mail or hand delivery to the Orange County Economic Development
131 W. Margaret Lane, Suite 205
Hillsborough, NC 27278
tlove@orangecountync.gov

Do you need money for your farm?



Local School Purchasing Program

The goal of this program is to increase market opportunities for our farms and also provide local, healthy foods in our schools. For those farms who have an interest in diversifying / scaling up into wholesale and institutional markets, particularly our schools, hospitals, and detention centers, we plan to offer assistance in achieving the required GAP (Good Agricultural Practices) Certification.



We will offer assistance and funding to our farmers in the GAP certification process to include funding for preparation course work (NCDA or CFSA), on-farm audits (NCDA), any potentially required infrastructure upgrades (up to a limit) for becoming certified.

Additional assistance, once GAP Certification is acquired, may include providing price differential funding to farmers as an incentive to sell into the wholesale market.



Farmland Matching

Farmland Matching provides the connection between young and beginning farmers and farmers who are seeking to lease or sell farmland. This can be a solution for retiring farmers that want to keep their land in agricultural production or farmers who are looking for farm managers, apprenticeship positions or to mentor a new farmer. This can include non-profit organizations or municipalities looking for farmers to tend farmland.

This gives farmers a unique opportunity to help encourage young and beginning farmers to build economically profitable and personally rewarding farm-related enterprises in Orange County.

New and beginning farmers or farmers looking to expand can gain experience and continue farming traditions with reduced financial risks.

<http://www.orangecountync.gov/farms/farmland-matching.php>



Program/Staff Contacts:

Steve Brantley, Director (919) 245-2325
sbrantley@orangecountync.gov

Mike Ortosky, Agricultural Economic Developer (919) 245-2336
mortosky@orangecountync.gov

Tina Love, Administrative Assistant III (919) 245-2325
tlove@orangecountync.gov

ORANGE COUNTY MANAGER'S OFFICE

200 S. CAMERON ST., HILLSBOROUGH, NC • (919) 245-2300

The County Manager's Office, through policy direction of the Board of County Commissioners, oversees the daily operations of the County and is highly supportive of the agricultural community and local economy. Additionally, the Manager's Office currently administers specific agricultural grant programs described below

http://www.orangecountync.gov/departments/county_manager_s_office/index.php

USDA Grant Funded Program

Orange County and the Piedmont Food and Agricultural Center (PFAP), a four county partnership, have been awarded \$145,511 in funds through the USDA Rural Business Development grant program. Of these funds, \$92,186 will be used to purchase additional capital equipment with which to expand the capabilities and capacity of PFAP to serve the region's food entrepreneurs. In addition, \$53,325 is directed at providing business support services and creation of a "road map" for start-up food businesses in collaboration with Carolina Farm Stewardship Association (CFSA).



PFAP is a vital part of the food and agricultural economy in Orange County. In the calendar year 2016, PFAP clients produced over \$2.6M in retail value and created more than 25 full time and 60 part-time jobs. This grant will allow PFAP to increase its service to local food and agricultural entrepreneurs, helping them launch and grow their businesses.

NCDA Grant Funded Loan Program

The Orange County Client Requested Operations Purchase Fund (CROP Fund) was created by a grant (\$32,500) from the ADFP (Agricultural Development and Farmland Preservation) Trust Fund and a matching amount (\$32,500) from Weaver Street Market of Hillsborough, North Carolina. The intent of the \$65,000 Fund is to support the purchase of NC Grown products to be used by clients of the Piedmont Food & Agricultural Processing Center (PFAP) in Hillsborough.

<http://www.ncagr.gov/paffairs/AgReview/articles/2016/10-16-ADFP-grants.htm>



Program/Staff Contacts:

Bonnie Hammersley, County Manager
bhammersley@orangecountync.gov

(919) 245-2300

Travis Myren, Deputy County Manager
tmryen@orangecountync.gov

(919) 245-2300

Melissa Allison, Executive Assistant
mallison@orangecountync.gov

(919) 245-2301

ORANGE COUNTY PLANNING & INSPECTIONS

131 W. MARGARET LN., HILLSBOROUGH, NC • (919) 245-2585



Planners seek to order and regulate land use in an efficient and ethical way to the benefit of local residents. This includes the protection of agricultural lands, specifically, bona fide farms.

www.orangecountync.gov/departments/planning_and_inspections/index.php

Land Use Regulations Regarding Bona Fide Farms

North Carolina General Statute (NCGS) 153A-340 prohibits local governments from imposing and/or enforcing land use regulations on property used for bona fide farming purposes.

According to State Law sufficient evidence demonstrating a property is a farm includes any of **one** of the following four criteria:

1. A farm sales tax exemption certificate issued by the Department of Revenue;
2. A copy of property tax listing showing the property is eligible for participation in the Present Use Value program;
3. A copy of the farm owner's or operator's Schedule F from the owner's or operator's most recent federal income tax return;
4. A forest management plan has been issued by the NC Department of Forestry allowing for the harvesting of trees.



Bona fide farm purposes/activities as detailed within NCGS 106-581.1 include: *'the production and activities relating or incidental to the production of crops, grains, fruits, vegetables, ornamental and flowering plants, dairy, livestock, poultry, and all other forms of agriculture.* NCGS 106-581.1 further explains the definition of farming and agriculture to include the marketing and selling of agricultural products, agritourism, the packing, treating, processing, sorting, storage, and other activities performed to add value to crops, livestock, and agricultural items produced on a farm and *"similar activities incident to the operation of a farm."*



The planning staff is more than happy to meet with you to discuss the status of your property and review what land use regulatory standards may or may not apply to your parcel.

Program/Staff Contacts:

Craig Benedict, Director (919) 245-2585
cbenedict@orangecountync.gov

Michael Harvey, Current Planning Supervisor (919) 245-2574
mharvey@orangecountync.gov

Elaina Cheek, Administrative Assistant III (919) 245-2585
echeek@orangecountync.gov

ORANGE COUNTY TAX ADMINISTRATION

228 S. CHURTON ST., HILLSBOROUGH, NC • (919) 245-2100

The Tax Office administers the property tax program in order to generate money for services in support of the health, safety, and welfare of the residents of Orange County. That includes the Present Use Valuation program, which allows for reduced taxes on land in use for agriculture, horticulture, or forestry as described.

<http://www.orangecountync.gov/departments/tax/index.php>

Present Use Valuation

The North Carolina Legislature enacted the present use value program to allow for reduced tax values of individually owned property involved in agricultural, horticultural or forestry management.

Agricultural Land Use – Agricultural land consisting of one or more tracts, one of which consists of at least 10 acres that are in actual production and for the three years preceding Jan. 1 of the year for which the benefit is claimed. Have produced an average gross income of at least \$1,000.

Horticultural Land Use – Land consisting of one or more tracts, one of which consists of at least five acres that are in actual production and for the three years preceding January of the year the benefit is claimed, have either produced an average gross income of \$1,000 or been used to produce evergreens intended for use as Christmas trees and meet gross income requirements.

Forestland Land Use – Forestland consisting of one or more tracts, one of which consists of at least 20 acres that is in actual production and not included in a farm unit.

http://www.orangecountync.gov/departments/tax/present_use_value.php

Program/Staff Contacts:

Dwane Brinson, Director
dbrinson@orangecountync.gov

(919) 245-2726

Roger Gunn, Chief Appraiser
rgunn@orangecountync.gov

(919) 245-2118

ORANGE COUNTY VISITOR'S BUREAU

501 W FRANKLIN ST., CHAPEL HILL NC ●(919) 245-4320

The Visitor's Bureau develops and coordinates visitor services in Orange County and implements marketing programs that will enhance the economic activity and quality of life in the community. These efforts include and celebrate the rural and agricultural nature of the County that is one of Orange County's most valuable resources.

www.visitchapelhill.org/



Visit NC Orange County Farms

The Visit NC Orange County Farms app is a collection of some 200 rural assets providing tourists and residents the opportunity to learn about and explore farms and their interconnected within the community. The mobile app encourages the consumer to appreciate agriculture and local food.

The mobile app is a comprehensive tool with an easy click through to a destination's captivating visuals, phone numbers, websites and social media.

With one click, mobile app users may share ideas and marketing. Push notifications alert users to what's new, what's in season and special events and offerings.

www.visitncfarmstoday.com/



Program/Staff Contacts:

Laurie Paolicelli, Executive Director
lpalicelli@orangecountync.gov

Annie Baggett, NCDA Agritourism Director
annie.baggett@ncagr.gov

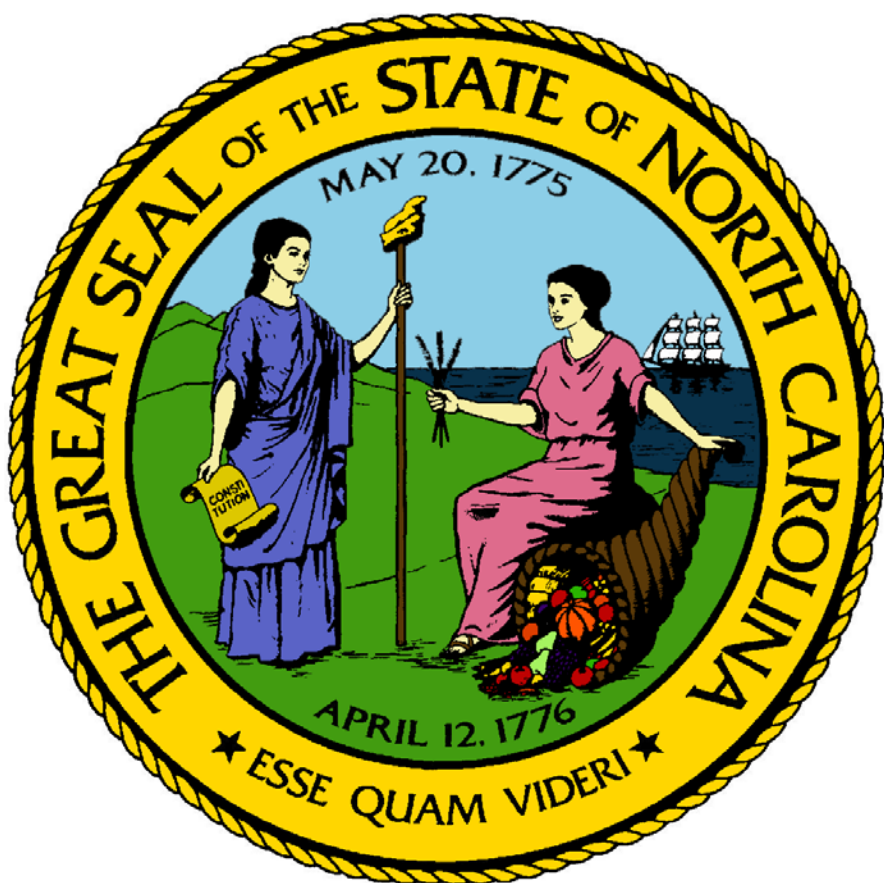
Tina Love, Administrative Assistant III
tlove@orangecountync.gov

(919) 245- 4322



(919) 245-2325

STATE OF NORTH CAROLINA AGENCIES



N.C. COOPERATIVE EXTENSION-ORANGE COUNTY

306-E REVERE RD., HILLSBOROUGH, NC • (919) 245-2050

North Carolina Cooperative Extension partners with communities to deliver education and technology that enrich the lives, land and economy of North Carolinians.



<https://orange.ces.ncsu.edu/>

Agriculture & Food

- Animal Agriculture
- Aquaculture
- Commercial Horticulture, Nursery & Turf
- Farm Health & Safety
- Field Crops
- Food Safety & Processing
- Master Gardener Volunteer
- Pest Management
- Specialty Crops
- Work shops

The Beginning Farmer and Breeze Farm Incubator

The Breeze Farm Incubator seeks to revitalize agriculture in Orange County and provides a place for people interested in learning to farm, but without a place to do so. It also provides tools, infrastructure and services which minimize the start-up capital need to start a small farm.



This arrangement allows aspiring farmers to determine whether farming is really something they want to pursue without the worry of having to repay loans.

If you are interested in starting your own farm and/or would like more information, please contact Orange County Cooperative Extension.

<https://orange.ces.ncsu.edu/2017/03/the-breeze-farm-incubator-brochure/>

Orange County Agricultural Summit

Orange County has been holding annual Agricultural Summits since 1998 which continue to be a source of information, resources for farmers, agricultural diversity and an event to discuss



a wide range of topics with other farmers, local government elected officials, agriculture vendors, and experts in the field.

Each year a topic or theme is chosen that is geared toward current interests, barriers, new resources and recent events. It is an all-day event and included lunch using local resources.

Local producers, agricultural product vendors, agricultural agencies, government agricultural departments and field experts are provided with space and invited to be onsite to offer information and suggestions regarding their products or knowledge.



This is a great time to meet, network, socialize and learn in an agricultural setting.

http://www.orangecountync.gov/departments/public_affairs/agricultural_summit/index.php

Junior Livestock Show

Orange County hosts the Annual Central Piedmont Junior Livestock Show and Sale. Youngsters ages 5-18 from the 10 surrounding counties, Alamance, Caswell, Chatham, Durham, Granville, Guilford, Orange Person, Randolph, and Wake Counties compete to bring home the prize of best in show!



Every year promises to be bigger and better than the previous year, with exciting competition involving more than 100 participants showing single or multiple animals. Initial animal species class breakdown include swine, beef cattle, sheep, and meat goats!

The initial family event is free and is held at the Holstein Barn at 6716 Orange Grove Road, Hillsborough, NC 27278.

Please support 4-H and Future Farmers' of America, (FFA). Let your family see real cows, goats, sheep, pigs up close and meet some of our brightest kids showing these animals.

10% Campaign

***Make the Choice. Make a Difference.
Make it Local.***

The NC 10% Campaign is a statewide initiative encouraging consumers to spend 10% of their existing food dollars with local food producers adopted as a goal by the Orange County Board of Commissioners



By buying from local farmers consumers keep their food dollars in the local economy, which helps revitalize our rural economy and helps create or expand local agricultural related businesses.

<http://www.nc10percent.com/>

Local Foods

Since 2002 the fastest growing segment of agriculture in Orange County has been direct to consumer sales by Orange County farmers. Direct to consumer sales grew from \$171,000 in 2002 to \$1,422,000 in 2012—an increase of 732% in just ten years. It continues to grow, to this day.

Orange County leads the state in the production of diversified direct to consumer sales of fresh, farm produced foods. Small vegetable farms in the county have flourished since 2002, taking advantage of consumer interest in locally-produced, high quality produce. Additionally, meats, eggs, dairy products, and cut flowers produced in the county add to the diversity of farm products found in local farmers' markets, farm and roadside stands, Community Supported Agriculture shares, and area farm-to-table restaurants.

The growth of this agricultural segment provides many benefits including increased gross income per acre for farmers. Money generated benefits the rural economies where these farms are located. New businesses are created to supply and provide services, distribute and sell farm products. Local restaurants that participate in the area's farm-to-table restaurants rely on food produced by Orange County farms to attract their clientele.

<https://localfood.ces.ncsu.edu/>



Program/Staff Contacts:

Tyrone Fisher, Director (919) 245-2051
tyrone_fisher@ncsu.edu

Mart Bumgarner, Extension Agent, Agriculture (919) 245-2062
Mart_bumgarner@ncsu.edu

Michael Lanier, Area Agent, Agribusiness (919) 245-2063
mlanier@orangecountync.gov

Kay Evans, Administrative Assistant (919) 245-2059
kevans@orangecountync.gov



N.C. FOREST SERVICE-ORANGE COUNTY

110 BOONE SQUARE HILLSBOROUGH, NC • (919) 732-8152

The NC Forest Service's (NCFS) primary goal is to ensure adequate and quality forest resources for the State to meet its present and future needs. Forestry is part of agricultural land use and contributes dramatically to the local and state economy. The NCFS provides many programs and services to include Forest Management Plans. <http://www.ncforestservice.gov/>



Forest Management Plan

North Carolina woodland owners are eligible for deferment of property taxes through the State's forestry present-use value program (PUV). To be eligible, qualified woodland of 20 acres or more must be actively engaged in the commercial growing of trees under sound management. A written forest management plan (also known as a woodland plan) is a program requirement.

<http://www.ncforestservice.gov/publications/Forestry%20Leaflets/FM20.pdf>

Contacts:

Jennifer Roach, District Forester

jennifer.roach@ncagr.gov

(919) 732-8105

Christian Hirni, Orange County Ranger

orange.ncfs@ncagr.gov

(919) 732-8152



U.S. FEDERAL AGENCIES



USDA FARM SERVICE AGENCY - DURHAM-ORANGE

306 REVERE RD, HILLSBOROUGH, NC • (919) 732-4301

Farm Service Agency (FSA)-

Farm Service Agency serves all farmers, ranchers and agricultural partners through the delivery of effective, efficient agricultural program.

www.fsa.usda.gov/



FSA is a customer-driven agency with a diverse and multi-talented work force, dedicated to achieving an economically and environmentally sound future for American agriculture.

Farm Numbers -

USDA Farm Service Agency Farm numbers are designed for participation in USDA Programs through FSA and/or USDA Sister Agencies. To receive a farm number in Orange County, FSA Producers must provide:

AD-2047 – Customer Data worksheet for each owner

Map of the area

Copy of land deed

Proof of USDA Program Participation

OR

Actual records of farm practices beginning on the land for which the farm number is being requested (example: receipts of purchase of fertilizer, seeds, plants, animals, etc.) and proof of income that is being generated from the land that the farm number is being requested.

Applications will be taken to the Orange-Durham County committee for farm number request approvals at the next monthly County Committee meeting. (Meetings are held the 3rd Thursday of the month.)

Eligible farms are subject to spot checks annually.



FSA Farm Loans

FSA's loan programs are designed to help families to start, purchase or expand their farming operation. In many cases, these are beginning farmers who need additional financial and business acumen to qualify for commercial credit. In other cases, they are farmers who have suffered financial setbacks from natural disasters, or who need additional resources with which to establish and maintain profitable farming operations.

Some farmers obtain their credit needs through the use of loan guarantees. Under a guaranteed loan, a commercial lender makes and services the loan, and FSA guarantees it against loss up to a maximum of 90 percent in most cases. In certain limited circumstances, a 95 percent guarantee is available. FSA has the responsibility of approving all eligible loan guarantees and providing oversight of lenders' activities.

<https://www.fsa.usda.gov/programs-and-services/farm-loan-programs/index>



Farm Ownership Loans

Eligible applicants may obtain direct loans up to a maximum indebtedness of \$300,000. Maximum indebtedness for a guaranteed loan is \$1,399,000 (amount adjusted annually for inflation). The maximum repayment term is 40 years for both direct and guaranteed farm ownership loans. In general, loan funds may be used to purchase a farm, enlarge an existing farm, construct new farm buildings and or improve structures, pay closing costs and promote soil and water conservation and protection.

<https://www.fsa.usda.gov/programs-and-services/farm-loan-programs/farm-ownership-loans/index>

Farm Operating Loans

Eligible applicants may obtain direct loans for up to a maximum indebtedness of \$300,000. Maximum indebtedness for a guaranteed loan is \$1,399,000 (amount adjusted annually for inflation). The repayment term may vary, but typically it will not exceed seven years for intermediate-term purposes. Annual operating loans are generally repaid within 12 months or when the commodities produced are sold. FSA direct farm operating loans may be made to purchase items such as livestock, farm equipment, feed, seed, fuel, farm chemicals, insurance and other operating expenses. They can also be used to pay for minor improvements to buildings, costs associated with land and water development, family subsistence and refinancing debts under certain conditions. To qualify for a direct loan, the applicant must be unable to obtain credit from commercial credit sources, able to show sufficient repayment ability and pledge enough collateral to fully secure the loan.

<https://www.fsa.usda.gov/programs-and-services/farm-loan-programs/farm-operating-loans/index>



Farm Storage Facility Loans (FSFL)

FSFL provides low-interest financing for producers to build or upgrade farm storage and handling facilities to store eligible commodities they produce. The program is administered by the U.S. Department of Agriculture (USDA) Farm Service Agency (FSA).



A producer may borrow up to \$500,000 per loan, with a minimum down payment of 15 percent. Loan terms

are up to 12 years, depending on the amount of the loan. Producers must demonstrate storage needs based on three years of production history. FSA also provides a microloan option that, while available to all eligible farmers and ranchers, also should be of particular interest to new or small producers where there is a need for financing options for loans up to \$50,000 at a lower down payment with reduced documentation. <https://www.fsa.usda.gov/programs-and-services/price-support/facility-loans/farm-storage/index>

Microloans

Microloans are a special subcategory of direct operating and farm ownership loans that provide flexible access to credit for small farming operations, including specialty, niche and local food producers. The Microloan Program includes a simplified loan application process and minimal paperwork. It provides additional flexibility in certain loan eligibility requirements, reduces documentation requirements and streamlines financial planning for small operations. Eligible applicants may obtain a microloan for up to \$50,000. For more information, visit www.fsa.usda.gov/microloans.



Insurance Programs -

Noninsured Crop Disaster Assistance Program (NAP)

NAP provides financial assistance to non-insurable crop losses due to drought, flood, hurricane or other natural disasters. Landowners, tenants or sharecroppers who share in the risk of producing an eligible crop are eligible. Eligible crops are those where crop insurance is unavailable. Also eligible for NAP coverage are controlled-environmental crops (mushrooms and floriculture), specialty crops (honey and maple syrup) and value loss crops (aquaculture, Christmas trees, ginseng, ornamental nursery and turf-grass sod).



The 2014 Farm Bill allows producers to purchase higher levels of coverage beyond the catastrophic coverage level for an additional premium. New, limited resource and targeted underserved farmers

are eligible for free catastrophic coverage and higher levels of coverage for a significantly discounted premium. For more information visit www.fsa.usda.gov/nap.

Disaster Assistance

Livestock Indemnity Program (LIP)

LIP provides benefits to livestock producers for livestock deaths in excess of normal mortality caused by adverse weather. In addition, LIP covers attacks by animals reintroduced into the wild by the federal government or protected by federal law, including wolves and avian predators. For more information, visit <http://disaster.fsa.usda.gov>.



Livestock Forage Disaster Program (LFP)

LFP provides compensation to eligible livestock producers who have suffered grazing losses for covered livestock on land that is native or improved pastureland with permanent vegetative cover or is planted specifically for grazing. The grazing losses must be due to a qualifying drought condition during the normal grazing period for the county. LFP also provides compensation to eligible livestock producers who have suffered grazing losses on rangeland managed by a federal agency if the eligible livestock producer is prohibited by the federal agency from grazing the normal permitted livestock on the managed rangeland due to a qualifying fire. For more information, visit <http://disaster.fsa.usda.gov>



Emergency Assistance For Livestock, Honeybees and Farm-Raised Fish Program (ELAP)

ELAP provides payments to eligible producers of livestock, honeybees and farm-raised fish to help compensate for losses due to disease (including cattle tick fever), adverse weather or other conditions, such as blizzards and wildfires, as determined by the Secretary. ELAP was authorized by the 2014 Farm Bill as a permanent program and provides retroactive authority to cover losses that occurred on or after Oct. 1, 2011. ELAP assistance is provided for losses not covered by the Livestock Forage Disaster Program (LFP) and the Livestock Indemnity Program (LIP). For more information, visit <http://disaster.fsa.usda.gov>.

Conservation Programs

Conservation Reserve Program (CRP)

CRP is a voluntary program available to agricultural producers to plant long-term, resource-conserving grasses or trees on environmentally sensitive farmland to improve the quality of water, control soil erosion and enhance wildlife habitat. In return, FSA provides participants with rental payments and cost-share assistance. Contract duration is between 10 and 15 years. For more information, visit www.fsa.usda.gov/crp.

Conservation Reserve Enhancement Program (CREP)

CREP is a part of the CRP whereby non-federal partners and resources are coupled with federal resources to address high-priority conservation concerns within a State. CREP is a voluntary program that helps agricultural producers protect environmentally sensitive land, decrease erosion, restore wildlife habitat and safeguard ground and surface water. For more information, visit www.fsa.usda.gov/conservation.



Program/Staff Contacts:

Tina Miller, County Executive Director
tina.miller@nc.usda.gov

(919) 732-4301 x 2

Michelle Winslow, Farm Loan Manager
Michelle.winslow@nc.usda.gov

(252) 426-5802

NON PROFITS AND OTHER AGENCIES

PIEDMONT FOOD & AGRICULTURE PROCESSING CENTER (PFAP)

500 VALLEY FORGE RD. HILLSBOROUGH, NC • (919) 241-4212

The Piedmont Food & Agriculture Processing Center is a business incubator for food entrepreneurs
<https://www.pfapnc.org/>



Culinary Incubator & Shared Use Kitchen

Located in Hillsborough, NC, PFAP was started as a joint project of Alamance, Chatham, Durham, and Orange Counties as a base for launching and growing food businesses in the Piedmont area. PFAP is a pending 501(c)3 nonprofit.

The facility offers commercial kitchen space in order to enable local food and agricultural entrepreneurship. With 10,000 square feet, PFAP has kitchen spaces, dry, refrigerated and frozen storage, and office space available for rent. PFAP is open 24 hours a day providing food producers, food truck operators and caterers access to commercial kitchen space at times that work best for their businesses.



PFAP currently has four commercial kitchens with specialized

equipment including a 60-gallon kettle, commercial ovens, juice press, a proofer and other specialized equipment designed to meet our mission to help you put your best food forward.

Program/Staff Contacts:

Eric Hallman, Executive Director
eric.hallman@pfapnc.org

(919) 241-4212

Sue Ellsworth, Manager
Sue.ellsworth@pfapnc.org

(919) 241-4212

ORANGE COUNTY FOOD COUNCIL

Building Partnerships, Identifying Issues, And Coordinating Action

The Orange County Food Council was formed in the spring of 2016 with the goal of growing a local food system that ensures health, sustainable agriculture, and access for all.



The Council's work is in building partnerships, identifying issues, and coordinating action. This is a unique model that brings together all the many interests in the food system to solve community problems.

Contacts:

Ashley Heger, Council Coordinator

ocfoodcouncil@gmail.com



Members – Ashley Heger, Jenn Weaver, Cyril Murphy, Eva Bailey, Ken Dawson, Stan Holt, Molly De Marco, Ashley Mercer, Valerie Green, Julia Sendor, Mike Ortosky, Sammy Slade, Mark Dorosin, Sally Green

LOCAL FARMERS' MARKETS

Orange County farmers markets provide not only delicious and healthy local foods but an important source of income for local farmers. They also act as an educational and social experience adding to the rich culture of Orange County.

Carrboro Farmers' Market

(919) 280-3326

www.carrborofarmersmarket.com

lashaunacfm@gmail.com



The Chapel Hill Farmers' Market

(919) 533-9496

www.thechapelhillfarmersmarket.com

farmersoforange@gmail.com



Eno River Farmers Market

www.enoriverfarmersmarket.com

enoriverfarmersmarket@gmail.com



Hillsborough Farmers Market

www.hillsboroughfarmersmarket.org

teamhfm@yahoo.com



Transplanting Traditions

(919) 967-9091

www.transplantingtraditions.com

transplantingtraditions@gmail.com



SCHLEY GRANGE

3416 SCHLEY ROAD • HILLSBOROUGH NC 27278

Schley Grange

www.schleygrange.org

The Grange was founded in 1867 to advance methods of agriculture and to promote the social and economic needs of farmer in the United States.

Schley Grange Hall is a chapter of the NC State Grange and National Grange organization serving the local farm community. Schley Grange is the largest affiliate in the State of North Carolina.



Schley Grange provides members the opportunity to meet with and get to know neighbors. It provides a place where children, youth and adults can grow, develop talents and social skill and learn leadership techniques. Members have the opportunity to discover and solve community needs and gives assistance to those in crisis. Schley Grange has a grassroots approach to local, state and federal legislative change and give members a voice in government forums.



**ADDITIONAL
AGRICULTURAL
RESOURCES
&
AGENCIES**

ADDITIONAL AGRICULTURAL RESOURCES & AGENCIES

CEFS



NCSU | NCA&T | NCDABCS

Center for Environmental Farming Systems

www.cefs.ncsu.edu

CEFS is a partnership of NC A&T State University, the North Carolina Department of Agriculture and Consumer Services and the NC State University. CEFS is one of the nation's most important centers for research, extension and education in sustainable agriculture and community-based food systems.



Carolina Farm Credit

www.carolinafarmcredit.com

Part of the Farm Credit System, serving the credit needs of rural America for over 100 years, North Carolina farmers and rural residents can apply for loans for farms, homes, agribusinesses and more from Carolina Farm Credit.



Carolina Farm Stewardship Association

www.carolinafarmstewardship.org

Carolina Farm Stewardship Association (CFSA) is a farmer-driven, membership-based non-profit organization helping people in the Carolinas grow and eat local, organic foods by advocating for fair farm and food policies, building the systems family farms need to thrive and educating communities about local, organic agriculture.



Farm Bureau

<https://www.fb.org/>

Farm Bureau is a non-profit organization and describes itself as the largest general farm organization in the United States and is working through grassroots organizations to enhance and strengthen the lives of rural Americans to build strong, prosperous agricultural communities.



North Carolina Department of Agriculture & Consumer Services

www.ncagr.gov

North Carolina Department of Agriculture & Consumer Services (NCDA&CS) is a state agency of North Carolina with divisions that have many regulatory and service areas in agriculture and consumer affairs.



Orange-Durham Cattlemen's Association

[www.facebook.com](https://www.facebook.com/orangedurham.cattlemensassociation)

[orangedurham.cattlemensassociation](http://orangedurham.cattlemensassociation.com)

Local organization which promotes cattlemen and the beef industry in the area.



Rural Advancement Foundation International

<http://rafiusa.org>

Rural Advancement Foundation International (RAFI) is a non-profit organization based in Pittsboro, North Carolina whose mission is to cultivate markets, policies and communities that sustain thriving, socially just and environmentally sound family farms. Working nationally and internationally, RAFI focuses on North Carolina and the southeastern United States.



Southern Sustainable Agriculture Working Group

www.ssawg.org

Southern Sustainable Agriculture Working Group's mission is to empower and inspire farmers, individuals and communities in the South to create an agricultural system that is ecologically sound, economically viable, socially just and humane



Weaver Street Market

www.weaverstreetmarket.coop

Weaver Street Market is a cooperatively owned grocer which provides an economically vibrant, environmentally sustainable, cooperative community center where coop owners and the community can buy healthy food, gather for fun and find rewarding employment. This position allows Weaver Street Market to support the local agriculture community in effective ways.

PREPARED BY



ORANGE COUNTY
ECONOMIC DEVELOPMENT

NORTH CAROLINA

131 WEST MARGARET LANE, SUITE 205
HILLSBOROUGH, NC 27278
(919) 245-2325

www.growinorangenc.com

www.orangecountync.gov/departments/economic_development.php